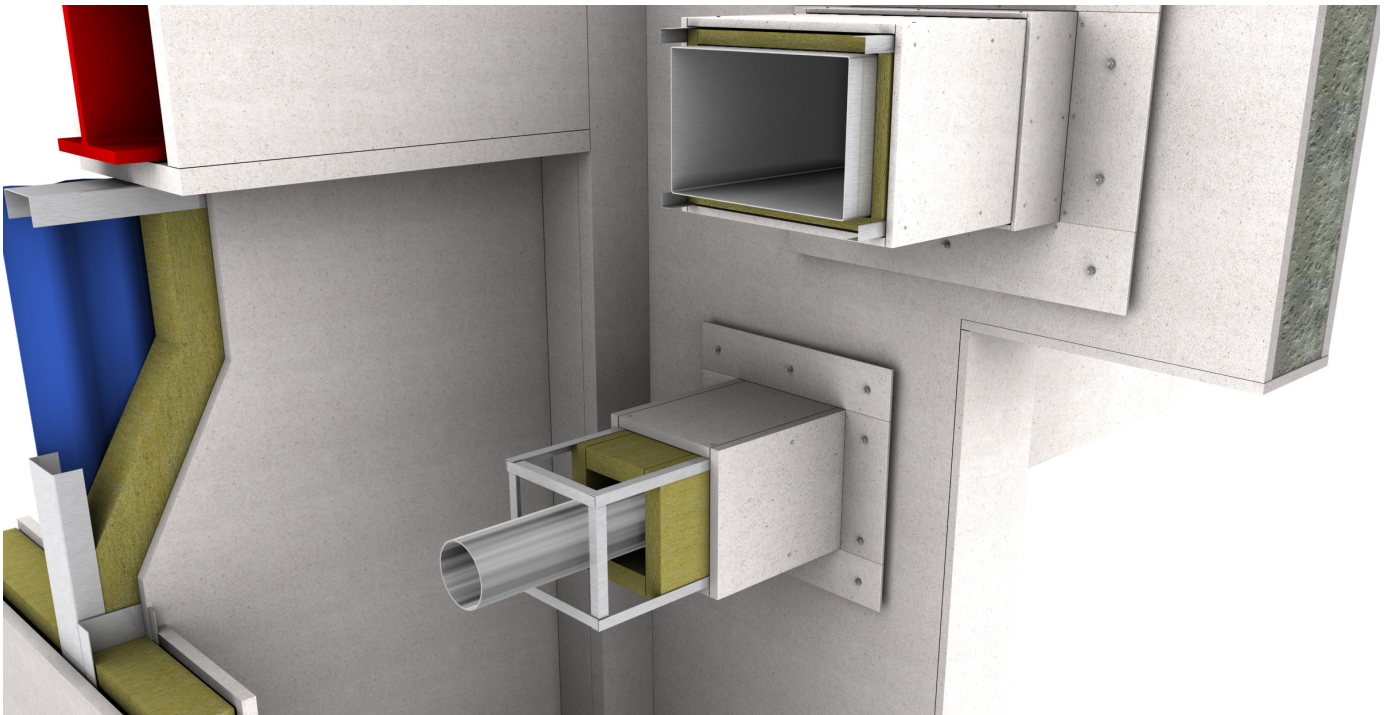


## PROMATECT®-H Product Data Sheet Fire resistant construction board



[www.promat-international.com](http://www.promat-international.com)



## General Description

PROMATECT®-H is a non combustibile matrix engineered mineral board reinforced with selected fibres and fillers. It does not contain formaldehyde.

PROMATECT®-H is off-white in colour and has a smooth finish on one face with a sanded reverse face. The board can be left undecorated or easily finished with paints, wallpapers or tiles.

PROMATECT®-H is resistant to the effects of moisture and will not physically deteriorate when used in damp or humid conditions. Performance characteristics are not degraded by age or moisture.

PROMATECT®-H can be produced with bevelled edges for use in partitions and suspended ceilings using a concealed grid system.

A health and safety data sheet is available from Promat and, as with any other material, should be read before working with the board. The board is not classified as a dangerous substance so no special provisions are required regarding the transportation and the disposal of the product to landfill. They can be placed in on-site rubbish skips with other general building waste which should then be disposed by a registered contractor in the appropriate and approved manner.



## Typical Mechanical Properties

Modulus of elasticity, E (BS EN 310: 1993)	Longitudinal N/mm <sup>2</sup>	4995
	Transverse N/mm <sup>2</sup>	4389
Flexural strength, F <sub>rupture</sub> (BS EN 310: 1993)	Longitudinal N/mm <sup>2</sup>	7.87
	Transverse N/mm <sup>2</sup>	5.82
Tensile strength, T <sub>rupture</sub> (BS 5669: Part 1: 1989)	Longitudinal N/mm <sup>2</sup>	7.14
	Transverse N/mm <sup>2</sup>	4.94
Compressive strength (average, perpendicular on board face) (BS 5669: Part 1: 1989)	N/mm <sup>2</sup>	11.36

## Applications

- Structural steel protection
- Steel/timber stud partitions, solid/frameless partitions
- Conversion of external to internal walls, external walls
- Self-supporting ceilings, suspended ceilings
- Timber floor protection, upgrading of timber floors
- Cladding to steel ducts, self-supporting ducts
- M&E services enclosure
- Smoke barrier, parapet/spandrel wall
- Access panels and hatches, fire doors
- Tunnel lining, concrete/brick floor and wall upgrading

## General Technical Properties

Product generic description		Matrix engineered mineral board
Material class	(BS 476: Part 4: 1970)	Non combustibile
Surface spread of flame	(BS 476: Part 7: 1997)	Class 1
Nominal density at EMC* (average)	kg/m <sup>3</sup>	975
Alkalinity (approximate)	pH	12
Thermal conductivity (approximate) at 40°C (ASTM C518: 1991)	W/m <sup>2</sup> K	0.242
Coefficient of expansion	m/mk	-6.4 x 10 <sup>-6</sup>
Nominal moisture content at EMC*		5-10%
Thickness tolerance of standard boards	mm	± 0.5
Surface condition		Front face: smooth Back face: sanded

Thickness (mm)	Weight per m <sup>2</sup> of sheet (approximate kg/m <sup>2</sup> )
6	5.22
9	8.77
12	11.7
15	14.6
20	19.5
25	24.3

All physical and mechanical values are averages based on standard production and tested according to internal procedures. The typical values are given for guidance. The figures can change dependent on the test methods used. If a particular value is of prime importance for a specification, please consult Promat Technical Department.



**Head Office**

**Promat International N.V.**

Bormstraat 24

2830 Tisselt

Belgium

T +32 15 718 100

F +32 15 718 109

E [info@promat-international.com](mailto:info@promat-international.com)

[www.promat-international.com](http://www.promat-international.com)

[www.promat-tunnel.com](http://www.promat-tunnel.com)

[www.promat-marine.com](http://www.promat-marine.com)

[www.promat-oilandgas.com](http://www.promat-oilandgas.com)