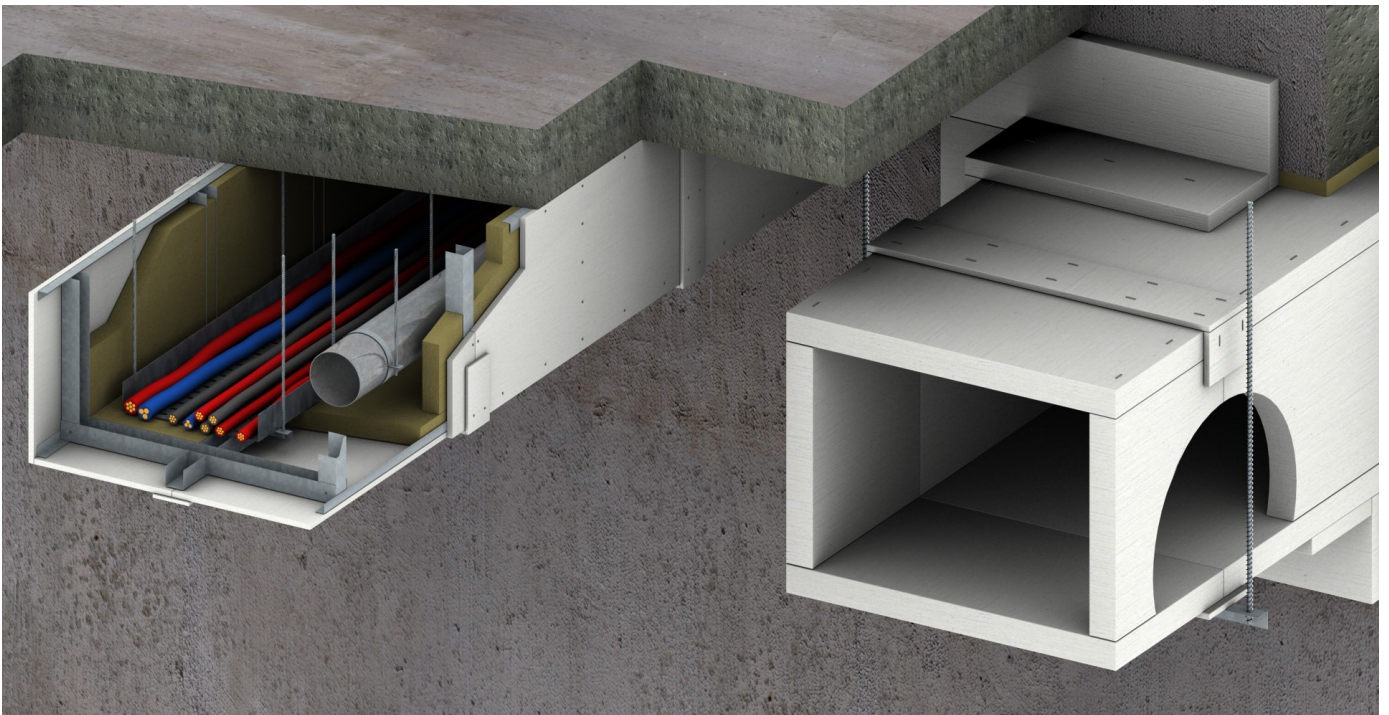


## PROMATECT®-L500 Product Data Sheet

### Fire resistant construction board



[www.promat-international.com](http://www.promat-international.com)



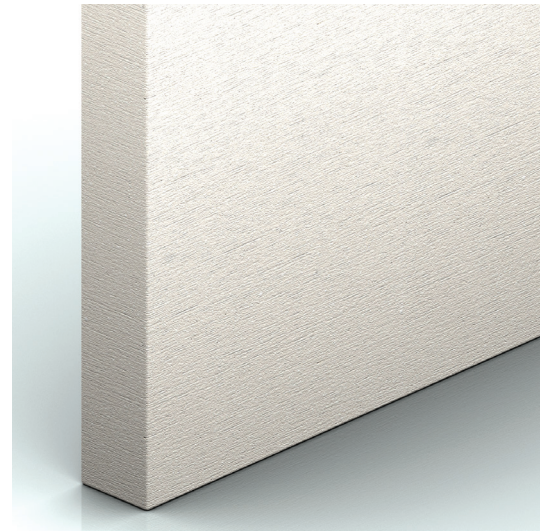
## General Description

PROMATECT®-L500 is a lightweight mineral matrix engineered board which is off-white/beige in colour and has a smooth sanded surface on one face with a lightly honeycombed texture on the reverse face.

PROMATECT®-L500 is resistant to the effects of moisture and will not physically deteriorate when used in damp or humid conditions. Performance characteristics are not degraded by age or moisture. Untreated surfaces will absorb water which can cause some loss of strength but strength is regained after drying. PROMATECT®-L500 does not encourage mould growth and is resistant to attack by vermin.

PROMATECT®-L500 is chemically inert and is resistant to diluted acids and alkalis. Boards should be protected where high chemical concentrations are likely to occur.

A health and safety data sheet is available from Promat and, as with any other material, should be read before working with the board. The board is not classified as a dangerous substance so no special provisions are required regarding the transportation and the disposal of the product to landfill. They can be placed in on-site rubbish skips with other general building waste which should then be disposed by a registered contractor in the appropriate and approved manner.



## Typical Mechanical Properties

Modulus of elasticity, E (BS EN 310: 1993)	Longitudinal N/mm <sup>2</sup>	1209
	Transverse N/mm <sup>2</sup>	1667
Flexural strength, F <sub>rupture</sub> (BS EN 310: 1993)	Longitudinal N/mm <sup>2</sup>	1.46
	Transverse N/mm <sup>2</sup>	2.42
Tensile strength, T <sub>rupture</sub> (BS 5669: Part 1: 1989)	Longitudinal N/mm <sup>2</sup>	1.00
	Transverse N/mm <sup>2</sup>	1.26
Compressive strength (average, perpendicular on board face) (BS 5669: Part 1: 1989)	N/mm <sup>2</sup>	4.04

## Applications

- Cladding to steel ducts, self-supporting ducts
- M&E services enclosure, cable protection systems
- Access panels and hatches

## General Technical Properties

Product generic description		Matrix engineered mineral board
Material class	(BS 476: Part 4: 1970)	Non combustible
Surface spread of flame	(BS 476: Part 7: 1997)	Class 1
Nominal density at EMC* (average)	kg/m <sup>3</sup>	500
Alkalinity (approximate)	pH	9
Thermal conductivity (approximate) at 40°C (ASTM C518: 1991)	W/m <sup>2</sup> K	0.095
Coefficient of expansion	m/mk	-2.5 x 10 <sup>-6</sup>
Nominal moisture content at EMC*		3.9%
Thickness tolerance of standard boards	mm	± 0.5
Length x Width tolerance of standard boards	mm	± 5
Surface condition		Front face: smooth sanded Back face: lightly honeycombed texture

Thickness (mm)	Standard dimensions (mm x mm)	Number of boards per pallet	Surface per pallet (m <sup>2</sup> /pallet)	Weight per m <sup>2</sup> of sheet (approximate kg/m <sup>2</sup> )	Weight per pallet (approximate kg)
20	2500 x 1200	43	129	10	1367
25	2500 x 1200	35	105	12.5	1386
35	2500 x 1200	25	75	17.5	1387
40	2500 x 1200	21	63	20	1335
50	2500 x 1200	17	51	25	1351
52	2500 x 1200	17	51	26	1402

All physical and mechanical values are averages based on standard production and tested according to internal procedures. The typical values are given for guidance. The figures can change dependent on the test methods used. If a particular value is of prime importance for a specification, please consult Promat Technical Department.



**Head Office**

**Promat International N.V.**

Bormstraat 24

2830 Tisselt

Belgium

T +32 15 718 100

F +32 15 718 109

E [info@promat-international.com](mailto:info@promat-international.com)

[www.promat-international.com](http://www.promat-international.com)

[www.promat-tunnel.com](http://www.promat-tunnel.com)

[www.promat-marine.com](http://www.promat-marine.com)

[www.promat-oilandgas.com](http://www.promat-oilandgas.com)